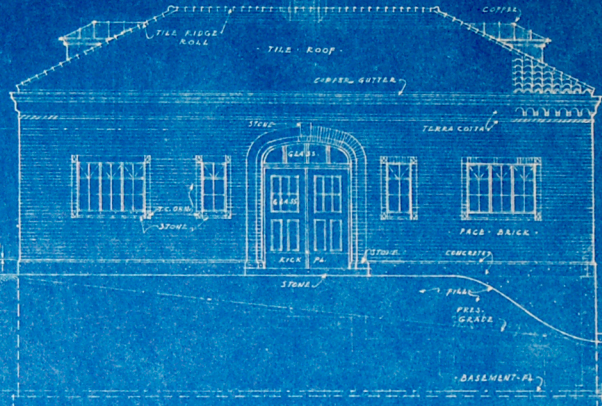
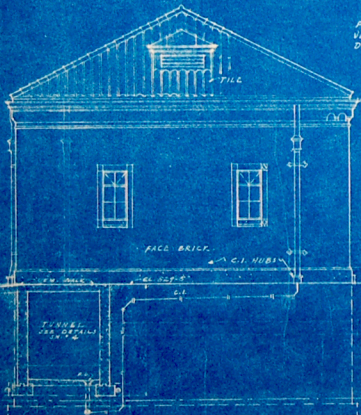


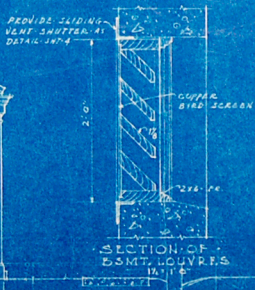
• SOUTH ELEVATION •
W = 1'-0"



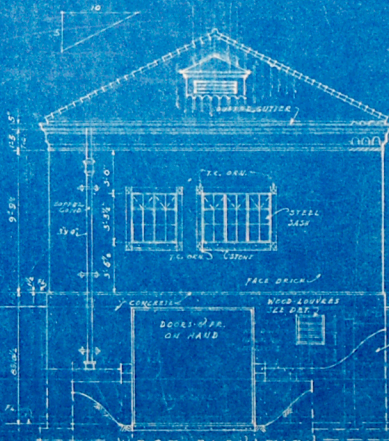
• NORTH ELEVATION •
W = 1'-0"



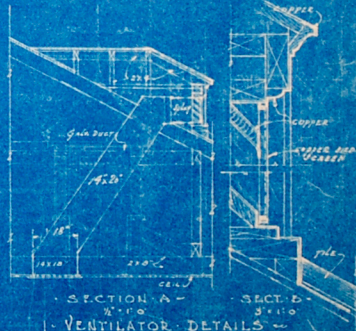
• EAST ELEVATION •



SECTION OF DORM. WINDOWS



• WEST ELEVATION •



SECTION A - SECTION B
VENTILATOR DETAILS

DATE MAY 5 1910	• ELEVATIONS •	JOB NO. 354.1 B
DRAWN L. G. B.	• COMFORT STATION - WAYNE COUNTY TRAINING SCHOOL NORTHVILLE, MICHIGAN •	W. F. A. P. E. S. ARCHT.
REVISED REVISED REVISED MAY 9	• NATHANIEL O. GOULD • • ARCHITECT & ENGINEER • • 301 DOVER BLDG. DETROIT •	DIRECTOR 2 OF OFFICE
CHECKED BY	APPROVED BY	

