



# SUGAR GROVE HISTORICAL SOCIETY

Founded 1984

## Newsletter Fall 2021

259 Main St.—P.O. Box 102

Sugar Grove, IL 60554

Email: [sugargrovehistory@att.net](mailto:sugargrovehistory@att.net)

[www.sugargrovehistory.org](http://www.sugargrovehistory.org)

Dear Members,

My name is Dave Frantz and earlier this year I was elected president of the SGHS. I would like all members to know that we need your help and active participation. Please know we need you and welcome all of you.

We have some thoughts on yearly projects and welcome your input. The Bliss House is open on Tuesday afternoons from 1 to 4pm or you can get in touch with any of us by phone or email to schedule a visit.

We are hoping to expand our membership. We have talked with Nancy Lupo of the Sugar Grove Public Library about setting up a children's reading program at Bliss House. Children would be accompanied by a parent, and it will give us exposure to younger families. Unfortunately, Covid has put this program on the back burner.

Last fall we expanded our quilt raffle outside our membership by advertising through our local merchants. The result was an increase in ticket sales by about 3.5 times the total of past years—approximately \$2500! We would like to increase that amount even more this year.

We are all looking forward to working with you to make the SGHS a strong and viable organization.

Yours Truly, Dave

### QUILT RAFFLE DRAWING—DEC. 6th

It is that time of year again. This beautiful quilt made by the very talented quilter, Vickie Frantz, will be raffled off on December 6th. We have enclosed tickets for anyone wishing to purchase a chance to win this beautiful holiday quilt.

One ticket \$5

Five tickets \$20

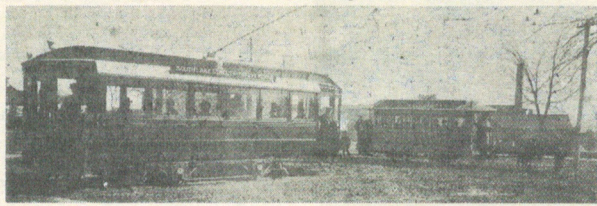


# Thrift Corner Yarns

Published Monthly by Aurora Savings & Loan Association



C. A. & E. cars in Broadway, 1926.



Aurora's horse drawn street cars (right) gave way to "new" electric cars in 1891.

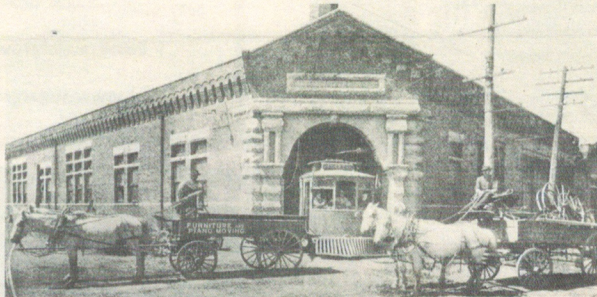
## CLANG! CLANG! CLANG! went the trolley

by Vernon Derry

The trolley car — gone forever from our streets, but it was a way of life — a way of transportation.

Aurora's first street cars appeared in 1883. Tracks were laid and horse or mule teams pulled the cars along the streets. An extra team was required to pull them up Main Street hill. One old conductor, Joseph Somereski sang to his mules instead of using a whip, hence the nickname "Music."

The car and horse barn was located on Water street, just north of the Gas Company building on Fox St. By 1884, the Aurora City Railway Company had built 6 1/2 miles of track. The first line ran from the barn to Fox Street, then to Broadway — north to Main Street, then east to Lincoln and south to the E. J. & E. tracks near Spring Lake Cemetery. Soon a branch was built from Main at Lincoln, north to New York Street and east to Ohio Street. A third line



Aurora Street Railway car-barn at Benton and Water streets in the early 1900's.

branched off the New York Street line at Fourth Street, north to Claim, east to Union then north a few blocks.

The west side's first line was short — west on Fox Street to River Street, then north to the C.&N.W. depot at Walnut and River. Later a line was built out Downer to Russell, while another ran out South Lake

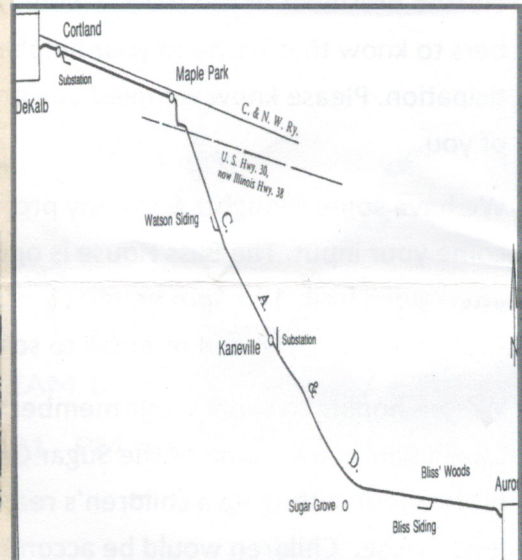
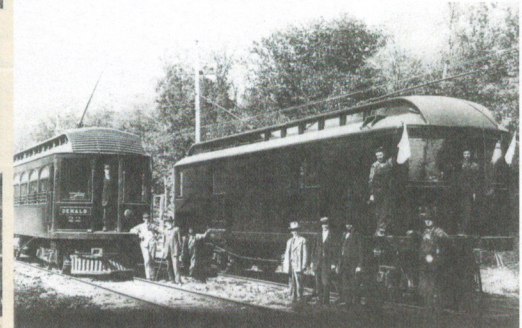
to Rathbone Avenue. Another line ran to Driving Park in Riddle Highlands.

After the Spring Street viaduct was completed in 1898, spanning the C.B. & Q. railroad tracks, all east side cars travelled over it instead of using Main Street.

Horse cars were replaced

Continued on page 3

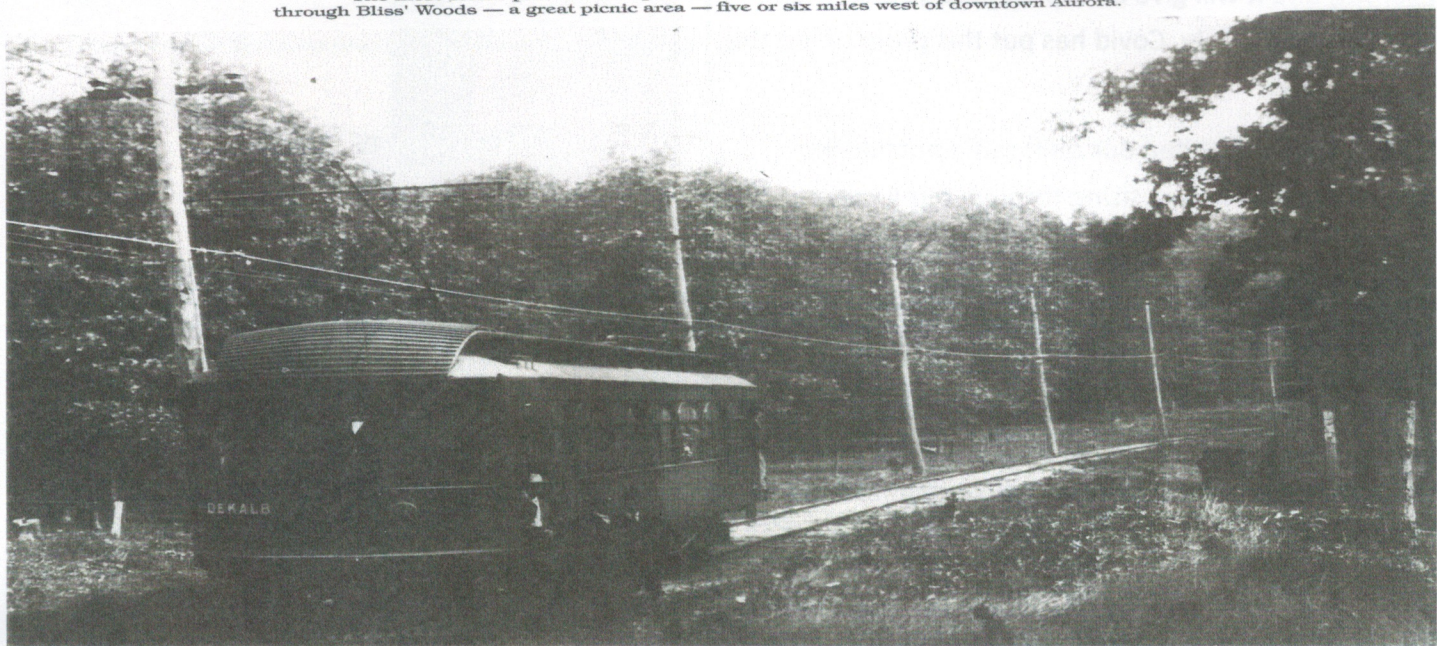
AURORA, DeKALB & ROCKFORD  
ELECTRIC TRACTION COMPANY



Open street cars met groups in N. Broadway, arriving on the C. A. & E., headed for Fox River Park, about 1915.

You may now pick up all back issues of Thrift Corner Yarns

The most scenic part of the trip from Aurora to DeKalb was that portion through Bliss' Woods — a great picnic area — five or six miles west of downtown Aurora.



when the Aurora Street Railway Company was incorporated in 1890 and purchased the horse drawn line. A power house and car barn were built in 1891 at Benton and Water Streets.

For up-river commuters, an electric car line between Aurora and Elgin was started, extending at first to Batavia where passengers changed to horse-drawn cars to Geneva where the electric line began again. Electric cars eventually ran all the way.

In 1897 a franchise was granted the Aurora, Yorkville and Morris Railway Company to build and operate an electric railway. Cars were soon operating to Oswego and Yorkville.

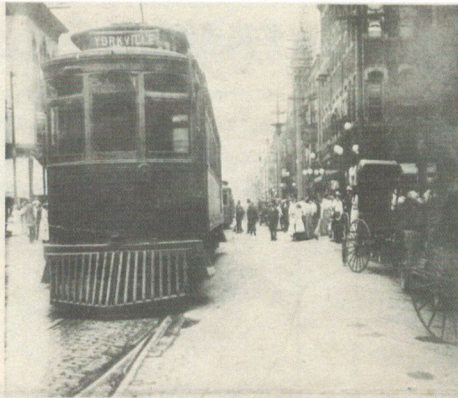
The Aurora, Wheaton & Chicago was given a franchise in 1899 and shortly afterwards changed its name to Aurora, Elgin & Chicago Railway Co. All street railways and cars in our town were then consolidated under their management. This line, the C. A. & E. gave fast service to and from Chicago's loop until 1957. The Elgin run was replaced with busses in 1926. National City Lines, Inc. have operated Aurora's busses since 1937.

The Aurora, Plainfield & Joliet Railway began operations in 1903 and continued until 1927 when they changed to busses.

Aurora was also linked by an interurban line with DeKalb and Sycamore by the Chicago, Aurora & DeKalb Railway. Gasoline driven cars were first used, then steam and finally electric cars. The road started operations in 1905 and was discontinued in 1923.

Those of us who have accumulated a few summers will never forget those open street cars used after the turn of the century. Evenings and weekends found people piling in, on and almost on those fresh air cars, headed for Fox River Park below Montgomery. A twenty-passenger car might easily have forty brave souls aboard.

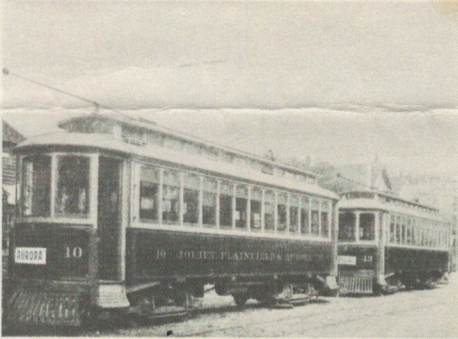
We dare not mention how yesterday's youngsters teased the conductor by pulling the trolley from the electric line. We will say nothing about how the boys "hooked" a ride when the motorman left his car for a moment.



Yorkville car waits for fares on Broadway near Fox street in 1908. Photo courtesy of Neil Frinks



Chicago, Aurora & DeKalb Electric Railway cars meet in Kaneville, Illinois. Harry Jarboe and Pratt Benjamin stand in foreground.



Fast electric cars carried passengers between Joliet and Aurora until bus service was established in 1927.

## Vintage train rolls through on Saturday

By Matt Hanley  
MHANLEY@SCN1.COM

The passengers on the Aurora-to-Chicago train lines Saturday could have a unique travel companion.

A vintage passenger train will travel through Big Rock, Sugar Grove, Aurora and Naperville Saturday on its way from Minneapolis to Chicago. The cars will be pulled by Southern Pacific's massive steam locomotive, the only surviving example of Southern Pacific's GS-4 class of streamlined steam locomotives.

No. 4449 will run the route of the former Chicago, Burlington and Quincy, which is now the Burlington Northern Santa Fe line. The excursion is one leg of a 5,000-mile journey from Portland, Oregon, to Owosso, Mich., for Train Festival 2009.

Coach tickets for the trip are \$145. Tickets are still available in first, premium and coach class at [www.261.com](http://www.261.com) or by calling 651-765-9812 between 9 a.m. and 4 p.m.

The train will leave Minneapolis at 8 a.m. and is scheduled to arrive in Union Station in Chicago by nightfall. The special passenger excursion will be sharing the rail line with regular freight service, so delays are possible.

The train will stop at the Amtrak station in Naperville to let off passengers. It is expected to be in Naperville about 5 p.m.

A number of variables could affect the arrival time, but the train will be in Rochelle about 4 p.m., and in the Aurora area by approximately 5 p.m.

Anyone who wants to see the train can follow its progress by GPS at [www.trainfestival2009.com/gps.html](http://www.trainfestival2009.com/gps.html).

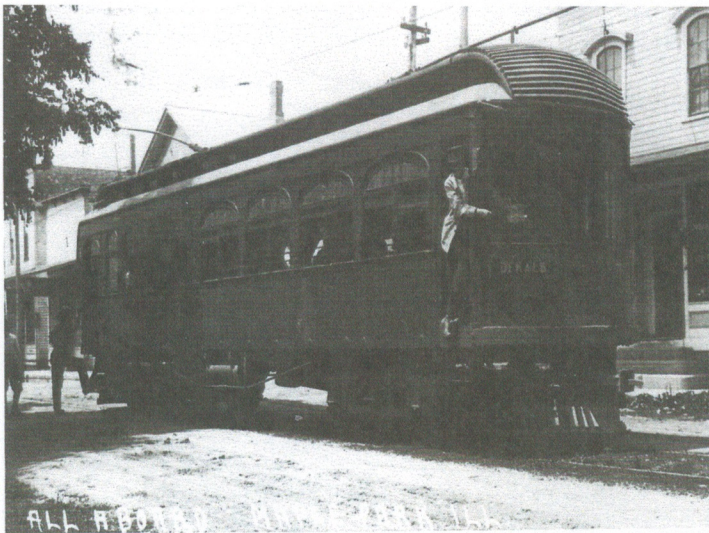
No. 4449 was built in Ohio for Southern Pacific in May 1941. No. 4449 was originally a premier passenger train between San Francisco and Los Angeles.

Together, No. 4449 and its water tender weigh 433 tons.

The oil-burning locomotive is 110 feet long, rides on 80-inch driving wheels and weighs **475,000 pounds**



Saturday  
18 July 2009



One of the interesting sources of revenue was during the pre-prohibition era. DeKalb was dry; Maple Park was wet. Late Saturday afternoon the rush would start out of DeKalb for Maple Park and its four or five taverns — saloons as they were called in those days. Both cars and bars would be jammed to the doors with customers from DeKalb. Then in the late evening, loads in excess of one hundred on the forty eight passenger cars were not unusual on return trips. (Occasionally a customer would miss the last car and would have to walk the eight miles back to DeKalb — generally along the right-of-way).

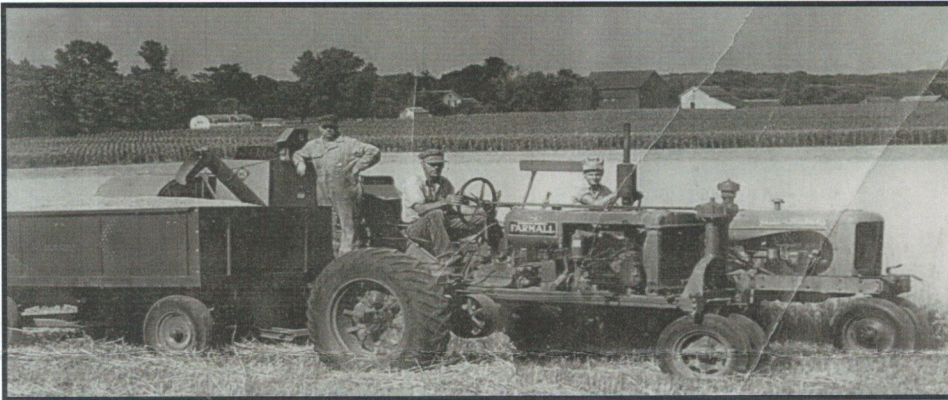
## SUPPORT YOUR LOCAL BOY SCOUT TROOP #41 SUGAR GROVE

The historical society wishes to thank out-going president, Rick Johnson, for his guiding hand through these many months of the covid pandemic. During this time he worked seamlessly with Kaneland High School student, Sean Liu, the Liu family and Sugar Grove Boy Scout Troop #41 on Sean's Eagle Scout project to digitize the archives of the SGHS and create a user-friendly interface with the SGHS website. Through our collaboration with Sean and a grant through the Kane County Office of Community Reinvestment and the Grand Victoria Riverboat Fund we were able to acquire at the cost of \$6011 the following equipment:

- |                             |                             |
|-----------------------------|-----------------------------|
| 2 Dell laptop computers     | Printer/scanner             |
| Large format scanner        | Fabric backdrops for photos |
| Book scanner                | Router                      |
| Kiosk stand                 | 3 external hard drives      |
| 32" monitor and monitor arm |                             |

Rick worked many hours along with Sean, Sean's parents, Kai and Alisa Liu, Sean's sister, Kaitlin, and the numerous scout volunteers to complete this project. Sugar Grove's history is secured for generations to come due to the hard work of all involved.

We invite you to visit us at [www.sugargrovehistory.org](http://www.sugargrovehistory.org)



Above: Delmar Kriegbaum on back tractor near Wheeler Rd.

Below: Photos from the Ashe family collection.



Right: Ad from Keck store

**IGA EVAPORATED MILK**  
**3 TALL CANS 19¢**  
 Dozen Cans - 75c

**SILVALASKA PINK SALMON**  
**2 TALL 1-LB. CANS 29¢**  
 6 cans 85c  
**Stock-up now!**

**RED 'A' FRESHLY ROASTED Coffee 3 LBS 39¢**

Combines economy and flavor in a most satisfactory proportion. You sacrifice neither when you buy Red 'A' Coffee.

<b>Hormel's Spam</b>	12 oz. Can	<b>29c</b>
<b>SUNSHINE KRISPY Crackers</b>	America's No. 1 Cracker	1 Lb. Pkg. <b>17c</b>
<b>SUNSHINE GRAHAM Crackers</b>	The Cracker with vitamins 'B', 'G' and 'D'.	Lb. Pkg. <b>18c</b>
<b>Cake Flour</b>	IGA Light and Fluffy Large Pkg.	<b>19c</b>
<b>Chocolate Drops</b>		Lb. <b>10c</b>
<b>Wheat Flakes</b>	Krakkrisp Lge. Pkg.	<b>10c</b>
<b>Gel. Dessert</b>	IGA Golden	3 Pkgs. <b>13c</b>
<b>Corn Syrup</b>	IGA Glass Jar	5 Lb. <b>29c</b>
<b>Table Salt</b>	IGA Round Pkg.	2 Lb. <b>8c</b>

**National RETAIL GROCERS WEEK**

OCTOBER 16th-21st

Be sure to get one of our Kitchen Health Charts during the big IGA Canned Food Sale!

<p>15c 13c 15c 25c 19c</p> <p style="text-align: center;"><b>PAUL SCHULZE BISCUIT CO.'S</b></p> <p><b>Assorted Sandwich Cookies</b> Lb. <b>23c</b>  <small>Light and Dark Wafers - Vanilla Cream Filling</small></p> <p><b>Pure Chocolate Creams</b> Lb. <b>19c</b>  <small>Creamy Marshmallow Enveloped in Pure Dark Chocolate</small></p> <p><b>Paradise Graham Crackers</b> Pound Package <b>17c</b></p>	<p style="text-align: center;"><b>Oscar Mayer's Meats!</b></p> <p><b>Pork Sausage Links</b> Lb. <b>29c</b>  <small>IGARMA Approved, Perfectly Seasoned.</small></p> <p><b>VENETIAN LOAF</b> Lb. <b>15c</b>  <small>IGARMA Approved</small></p> <p><b>BOILED HAMS</b> Lb. <b>26c</b>  <small>IGARMA Approved</small></p> <p><b>BRISKET BACON</b> Lb. <b>18c</b>  <small>IGARMA Approved</small></p> <p><b>TENDER PICNICS</b> Lb. <b>24c</b>  <small>IGARMA Approved</small></p>	<p style="text-align: center;"><b>CHOICE MEATS</b></p>
---	--	--

**DON'T FORGET--CLOVER FARM BUTTER!**

**C. G. WILSON'S CLOVER FARM STORE**  
 SUGAR GROVE, ILL. PHONE 6283

## Officers and Board Members

### President

Dave Frantz  
(630)999-3620

### Vice President

Rick Johnson  
(630)383-6394

### Secretary

Sue Jacobson  
(630)740-9425

### Treasurer

Lori McCaffrey  
(630)881-4426

### Historian

Joan Perrin  
(630)917-4435

### Directors

Ted Koch  
William Wulff  
Clif Frantz

## SUGAR GROVE HISTORICAL SOCIETY MEMBERSHIP

Individual	\$10	_____
Family	\$15	_____
Student (17 & under)	\$ 1	_____
Business/Organizations	\$25	_____
Supporting	\$50	_____
Individual/Family Life Member	\$200	_____
Donation		_____

Date \_\_\_\_\_

Names \_\_\_\_\_

Address \_\_\_\_\_

Phone \_\_\_\_\_

E-mail \_\_\_\_\_

MAIL TO:

**SUGAR GROVE HISTORICAL SOCIETY  
P.O. BOX 102  
SUGAR GROVE, IL 60554**

**THANK YOU!!!**

### MEMORIALS

Bill Wulff in memory of Terre Bourdeau

Bill & Ruth Anne Hartman in memory of Ralph & Mildred  
Hartman

### HONORING

Ken & Jane Laurie in honor of Ruth Frantz

Joshua Korsgarden in honor of Tim Wilson

### DONATIONS

Tim Wilson

Jack Shouba

Janice Carnes

Audrey Claesson

Melodee Probst

Ceryl Benson

Kristine Smetz & Michael Booth

### SUPPORTING MEMBERSHIP

William Lye

Ted & Norrain Phelps

The SGHS lost two long-time members who will be dearly missed.

Tressa (Harker) Goodale passed away on 10/22/2020 at the age of 103.

Fred Neiser passed away 6/29/2021 at the age of 90. Fred took many pictures of Sugar Grove that he donated to the historical society over the years.