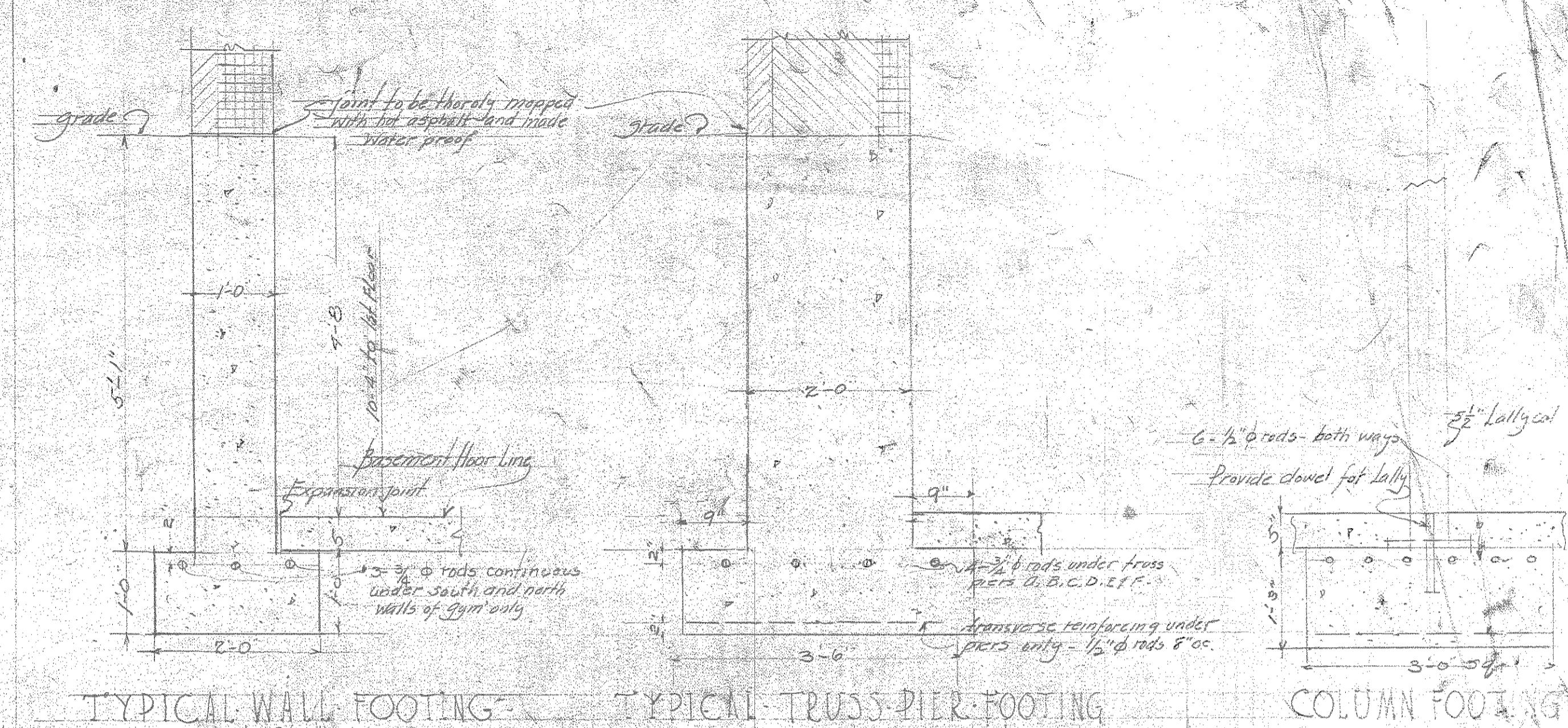
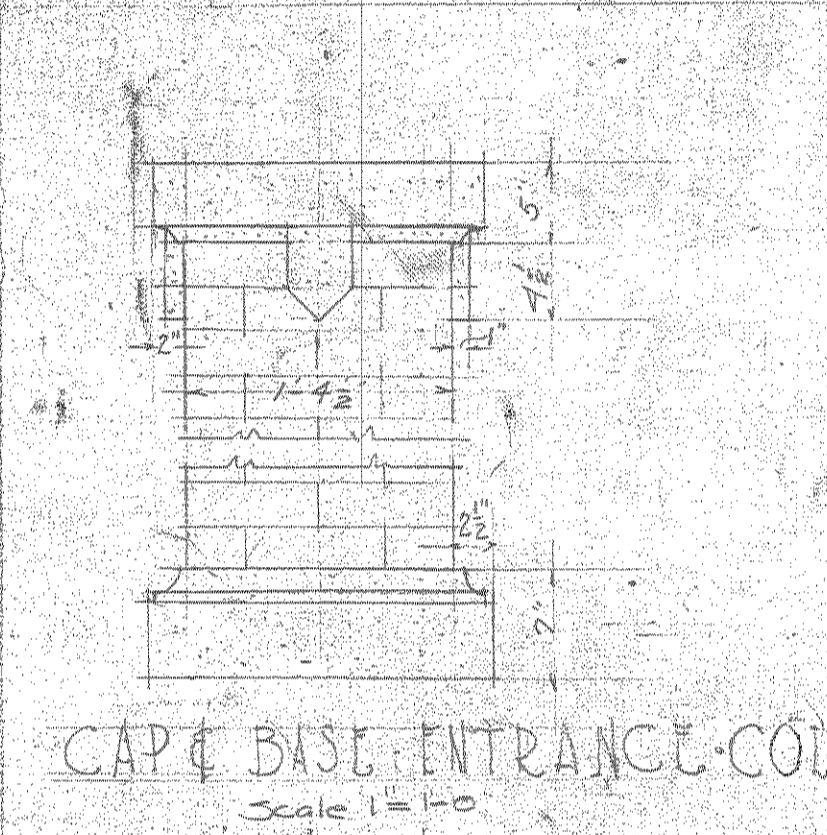


FRONT EAST ELEVATION
Scale 1/8" = 1'-0"

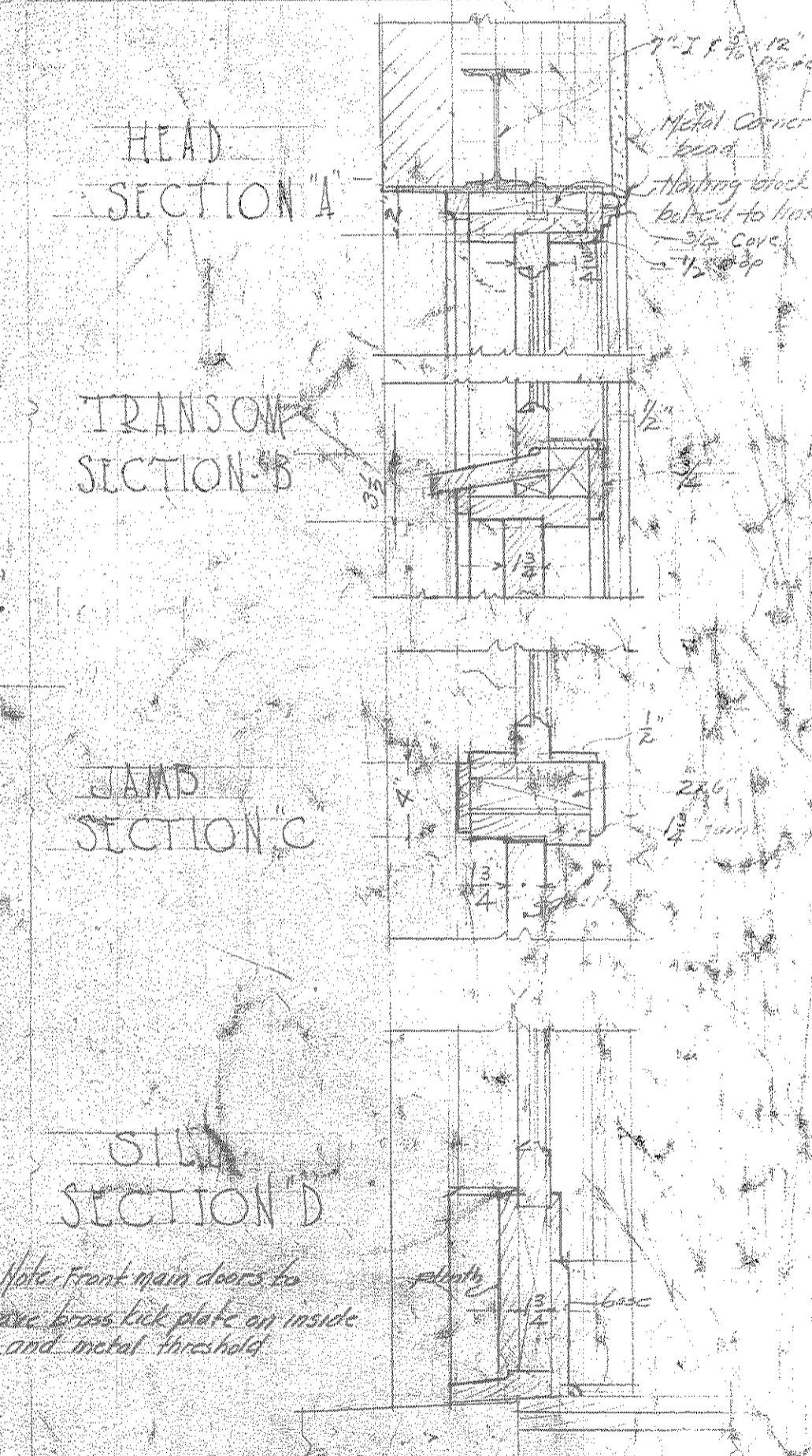
STICK GROVE COMMUNITY HOUSE, STICK GROVE, IN.



TYPICAL WALL FOOTING - Scale 3/4" = 1'-0"
TYPICAL TRUSS PIER FOOTING
COLUMN FOOTING



CAPE BASE ENTRANCE COL
Scale 1/2" = 1'-0"



MAIN ENTRANCE DETAILS
Scale 1/2" = 1'-0"