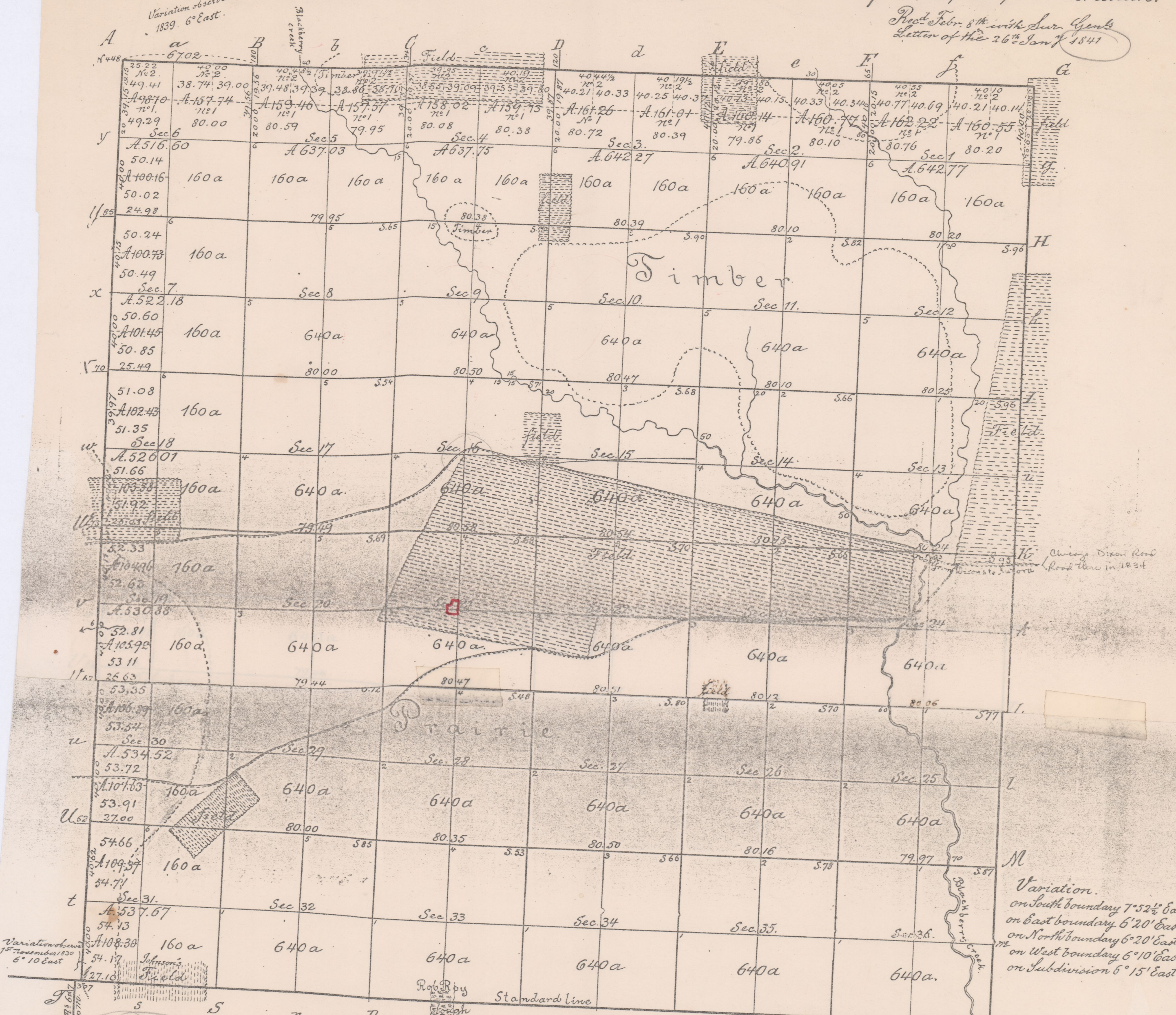


1840

Township No 38 North of the Base line in Range No 7 East of the 3rd principal Meridian.

1839
41



Variation observed 25 November 1839. 6° East.

Recd Febr. 8th with Sur. Genls Letter of the 26th Jan^y 1841

Variation observed 1st November 1830 6° 10' East

Variation. on South boundary 7° 52' East on East boundary 6° 20' East on North boundary 6° 20' East on West boundary 6° 10' East on Subdivision 6° 15' East.

Surveyors Office. Saint Louis 29th of September 1840.

Scale of 40 chains to one inch.

Aggregate area 22368.59. acres

The above plat of township 38 north of the base line in range 7 east of the 3rd principal meridian is strictly conformable to the field notes of the survey thereof on file in this Office which have been examined and approved. The South boundary 5 miles and 67.10 chains was surveyed by El. S. Prescott, in the 4th quarter of 1837, under contract signed by the Surveyor General on the 8th of May and by Mr. Prescott on the 3rd of June 1837, it was paid for in the 4th quarter of 1838, and charged in the account of the Surveyor General for that quarter, Voucher No. 5. The East boundary 6 miles. The West boundary 6 miles. The north boundary 5 miles and 67.02 chains - and the subdivisional lines 59 miles 44.12 chains were all surveyed in the 4th quarter of 1839, by James Thompson & John S. Thompson under their joint Contract of the 21st of September 1839. The surveys by Nelson Thompson, were paid for in this 3rd quarter of 1840, and they will be charged in the account current of the Surveyor General during the said quarter, under the General appropriation for surveying the public lands Voucher No. 7.

William Milburn
Surveyor of the public lands in
the States of Illinois & Missouri.

W.B.
A.T.

1839-39-41

DEPARTMENT OF THE
GENERAL LAND OFFICE
Washington, D. C.
I hereby certify that this is a true and
correct copy of the land to which it relates, as
surveyed by the Surveyor General during the
year 1839.

This is only correct on the lines. What is between
the lines is just assumed.