



Saturday April 9, 1938

PURDY STUDIO,
WELLS, MINN.

Looking East on
Galena Blvd From
Rt. 47



1984

~~DEPT. OF~~

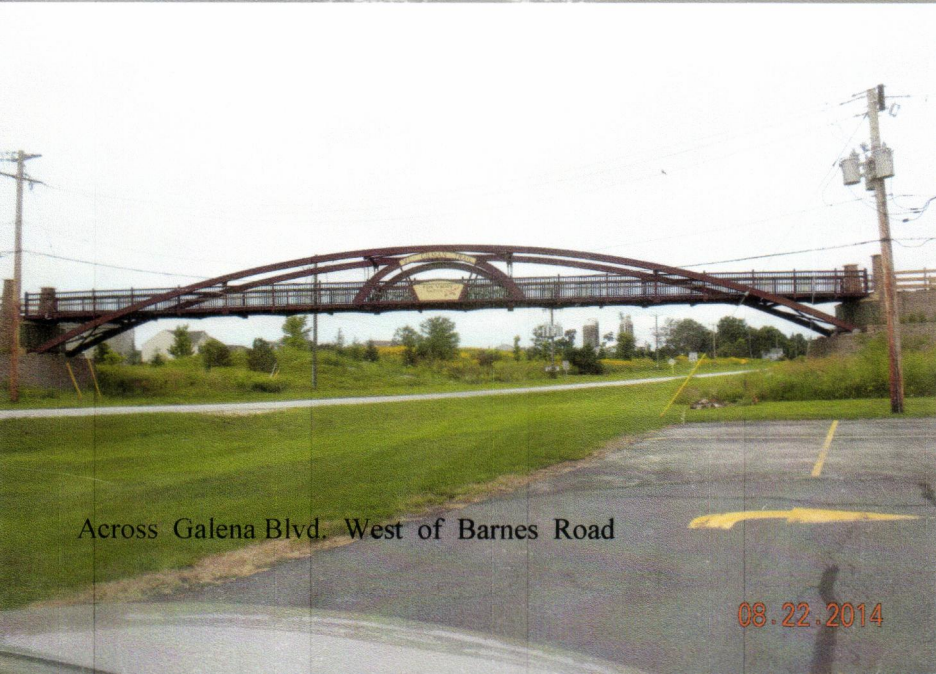
GALENA



9-11-90 B



9-11-90 B



Across Galena Blvd. West of Barnes Road

08.22.2014



2-11-2002

Salena Blod

6240111 N-2



1-1987



10-24-99A

Shirley Hankes Home on Smith Farm
41W736 Galena Blvd.

<No. 3510>

NOV 23 1991

120 22 071



10-7-2002

14A

West entrance to
Windsor Point Subdivision
from Galena Blvd



Board of Directors
Kirkwood Fire Station, June



10-24-99

8

41W736 Galena Blvd

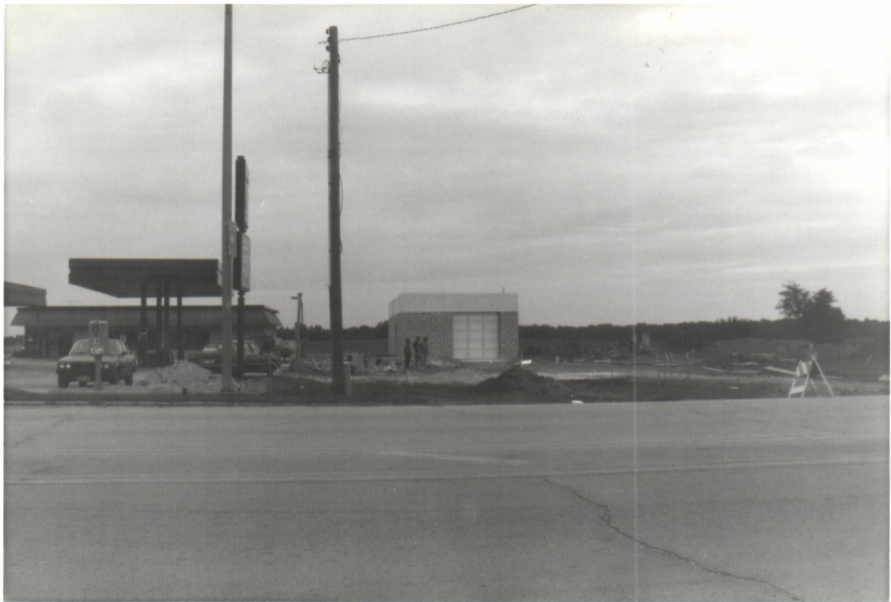
Hankes/Smith Farm



18-24-99

5

Smith (Klanke) Farm
from the east



9-18-90

Car wash ● 66 (Galena # 47)



1-1987

Galena #47 gas station



10-24-99
7

41 W682 Calumet Blvd.

Kankakee/Smith Farm



10-24-89

6

41 W & 82 Galena Blvd.

Hankes/Smitz Farm



9-30-99

33A



10-24-99A

41W 736 Gdara Blvd
Smith (Hankes) Farm

<No. 33FD> HFF 23101 11/14/13 071



2 22 '00

Hankes House on
Galena Blvd

NO. 23 - H.P. 2 - 1914 - 15 - 643



10-24-99A

41W736 Galena Blue.

Shirley Hankes home on Smith farm

NOV 23 1999 11:31 AM



16-24-99A

41W736 Galena Blvd.

Smith (Hankes) Farm

(No. 327) HFR 23-1-81

44W10-871



2-11-2002

24

East on Salena Rd. by
Denmore Rd.

6240111 H-2



2-11-2002

20

Former Lingham School

Valens Blvd + Densmore Rd

6200111 H-2



2-11-2002
21

Former Angham School

Halina Blvd + Densmore Rd

6200111 H-2



2-11-2002
22023

Ingham Home

Galena Blvd

6200111 N-2

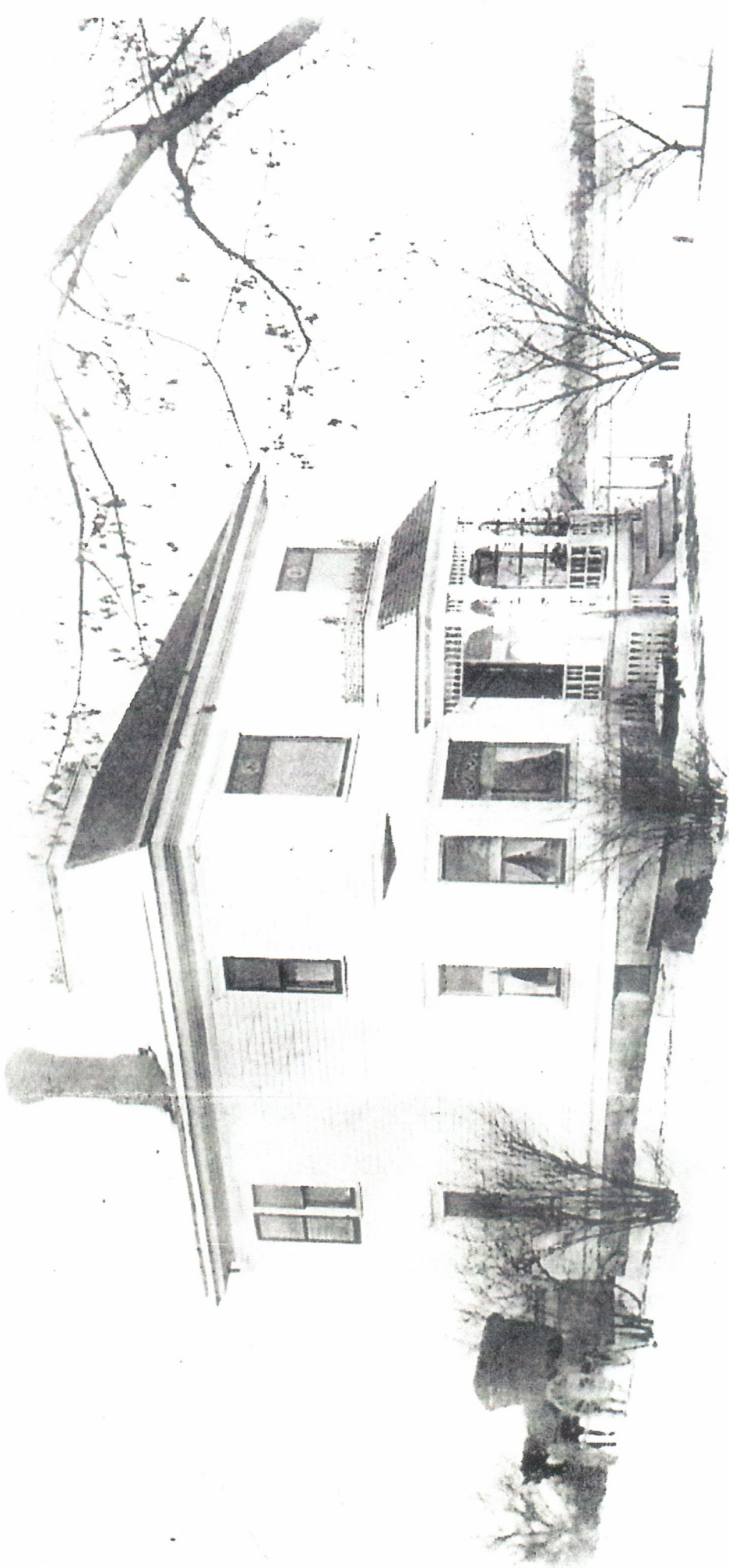


2-11-2002
22923

Ingham Home

Galena Blvd

6200111 N-2



William + Elizabeth Ferguson Home
Built c. 1900

Donald S. Myers, et al - No. 1 Main Building
Residence. Mrs. Stella Myers occupies this
residence. The view is from East to West
running parallel with U. S. #30. The white
marker shows the North side of proposed
right of way.

*INSERT: View of front
of residence. White
marker indicates North
line of proposed R/W.

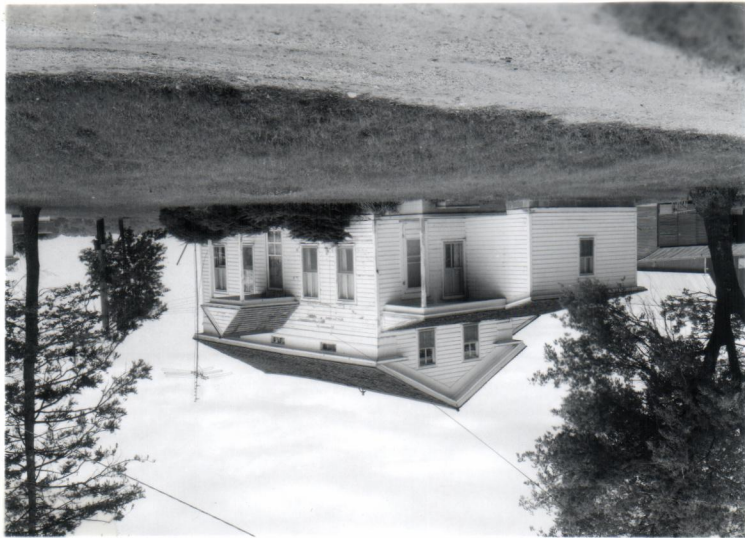


Donald S. Myers, et al - View is from East to West showing evergreen trees in background which will be taken by proposed highway program.



View is from East to West showing landscaping to be taken on the North side of U. S. #30.

View is from East to West.
*Note - small concrete slab marks the
location of well and electric water pressure
system.



Donald S. Myers, et al - Improvements No. 2.
View is from South to North. Tenant house which
is to be taken by the proposed highway program.

S. G. landmark makes way for progress

On Galena Road (Business 30) what has been known as Myers Hill for years, is to be cut down and widened, thereby requiring the demolition of the first Post Office in Sugar Grove Township.

It was kept by Cyrus Slater in 1840 and mail was brought there by Stage Coach enroute from Chicago to Galena. Letters cost twenty-five cents.

Wm. Myers purchased the farm from a man named Graves in 1882.

Since that time the house that was the Post-Office has been used as a dwelling, either by the Myers family or people connected with the farm.

It was a frame house. The floor joists are the original logs cut from the timber and the exterior walls are insulated with brick.

It is still in very sturdy condition but has to make way for progress.

rk News

Later in the evening they joined their sisters and brothers at a dinner, a celebration of her birthday. On Monday another dinner was given for her at the home of her daughter and husband, the Robert Allens of St. Charles.

The Jerri White family spent Saturday and Sunday, with Mr. and Mrs. Robert Nickels in Fort Wayne, Ind.

The Snack and Bid Card Club was entertained by Mrs. Edward Edgren, on Monday night. A dessert lunch, preceded an evening "500". Mrs. Andrew O'Malley, guest, won first prize. Other winners were Barbara Turk and Elizabeth Sanders.

The Richard Turners family and Mrs. Blaine Bakken of Debb, were Sunday supper guests of the Julian Myhres.

Mrs. Frank Plapp with Mrs. Ester Christensen as co-hostess, entertained the O.U.R. Society on 7-21 at her home in St. Charles.



The People of
Aurora
Welcome You
85.600
An Illinois Certified City

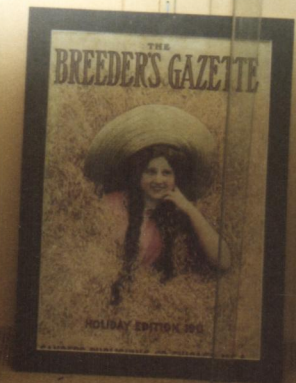


9-11-90 B



9-11-90 B

PAG ? on Galena Blvd
Cargill



8-2-87



9-11-90-B

Gillman Trail



10-24-99

9

Hankes terrate Farm -
from Hankes yard
Garlena Blvd



1-1987 Morris & Helen Gordon's home (junkyard)



9-11-90 B



OCT 1992
OFFICE WEST
OF GORDON FARM



Look EAST AT
Rt 56 + Salena Blvd

Oct 1992



Oct 1992

S at SW corner
Salina + Carterberg



9-18-90



B 9-11-90



9-18-90



9-11-90 B



9-11-90 B



1-1987



1-1987



4-1987

38

00001



1-1987



Oct 1992

NE from SW corner
Salena + Canterbury



1-1987

Tenant
~~Rent~~ house Hankes Farm



10-24-99A

Tennant house on Smith Farm
Galena Blvd. (W of main
Buildings)

Chp. 36ED - MKK 23-1 00111111- 071

GALENA
CANTERBURY RD



Oct 1992

East from SW.
corner
Salena + Carterberg



1-1987



1-1987 Stella & Nelson Meyer's



1-1987



1-1987

GALENA



Oct 1992

Visit from SWcom
Lalana + Canterbury



Oct 1992

North from SW
Canterbury
corner Helena⁺



SE at SW
corner
Galena + Canterbury

Oct 1992



10-24-98

Q

Former Nelson + Stella

Myer home

41W356 Galena Blvd.



9-30-99

33A



OUT RAGE

16-24-99

1

41 W 356 Galena Blvd.

Former Nelson Myers Farm



10-24-99

2

41 W 356 Stehens Blvd.

Former Nelson Rygas Farm



18-24-99

3

South Alamo Pt 49

from 41W 35E Colona Blue

(Nelson Myka Farm)



10-24-89A

Looking West from Smith
(Hankes) Farm at 41W 736 Galena Blvd

(No. 3410) HP# 23+602 41W 736 871



10-24-99A

Looking SW from Farm at

41 W 356 Galena Blvd

©No. 2810> HPE 23161 HPL 0001 071



10-24-99A

Looking SE from Farm at
41 W 356 Galena Blvd

CHG. 2510 HPY 23-187 HHHH82 671



10-24-89

4

41W35c Galena Blvd.

Former Nelson Trays Farm



10-24-99A

Was Nelson Myers Farm

41 W 356 Galena Blvd.

XMo. 2702 HIR 23-01 HHHH 02 021



PANNIER

10-24-99A

Was Nelson Myers Farm
41 W 356 Galena Blvd.

NOV 25 10 11 AM '99

Kodak
PAPER

Myers

NOV 25 10 11 AM '99

Kodak
PAPER