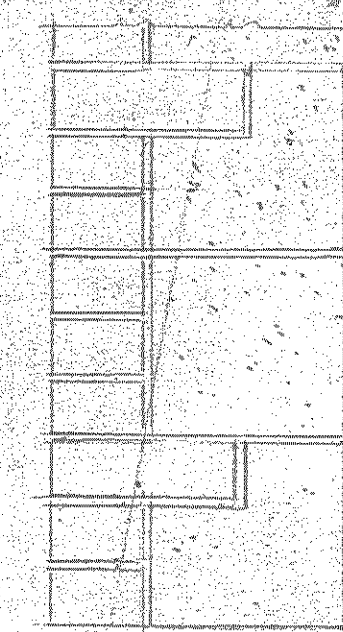


SECTION ON C-C TOWARD STAGE

SCALE 1/2" = 1'-0"



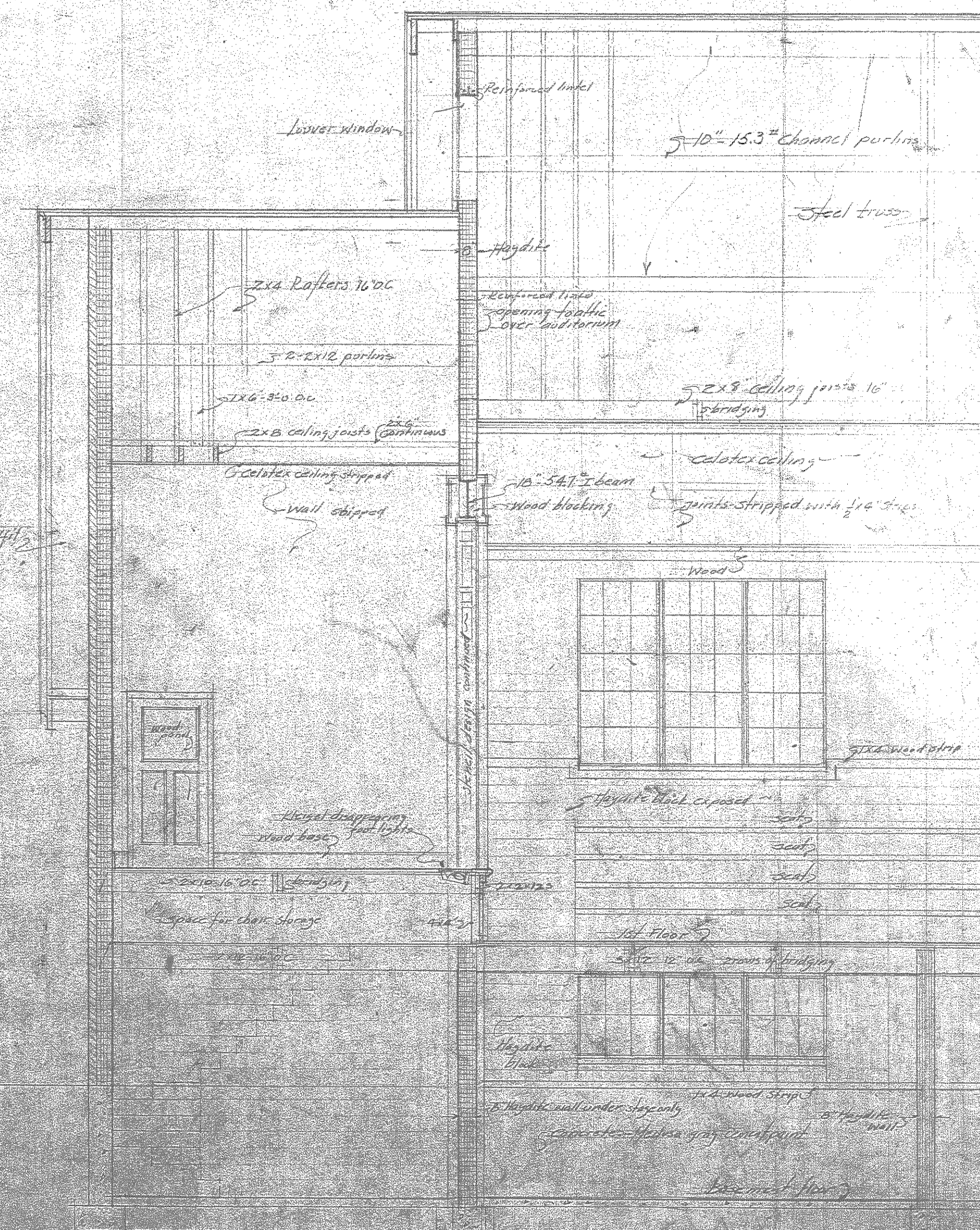
BONDING UNITS



MORTAR JOINTS IN HAYDITE FOR EXTERIOR WALLS

Scale 1/2" = 1'-0"

no thru joints



SECTION ON D-D THRU STAGE

SCALE 3/4" = 1'-0"